

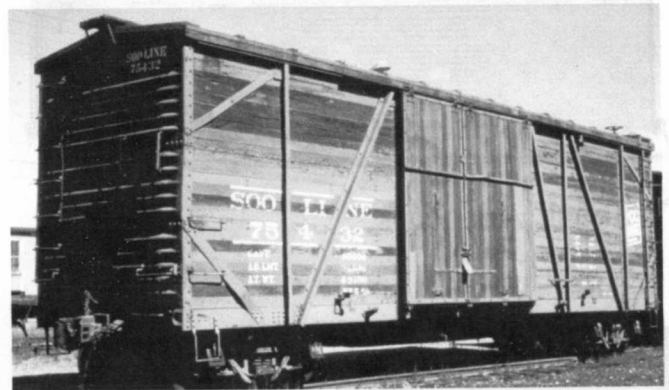
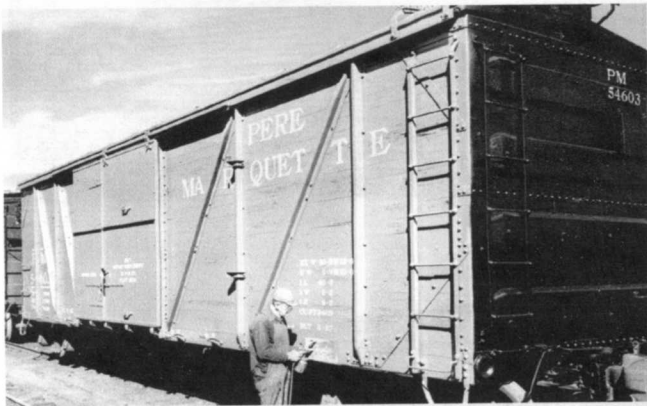


Box 4997, Springfield MO 65808-4997

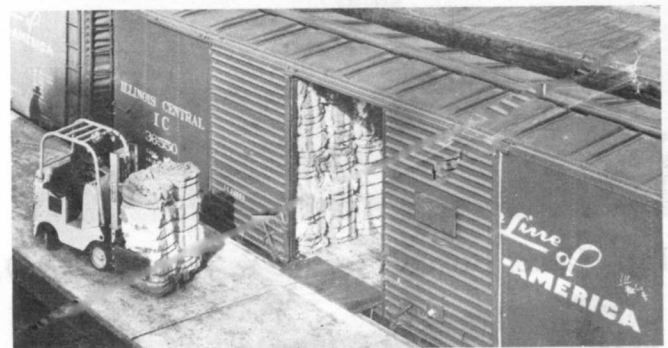
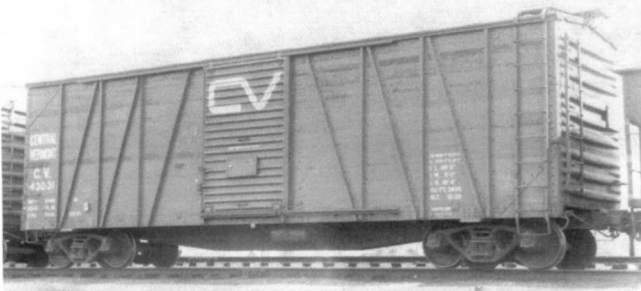
Naperville Introductions Oct. 20-22, 2011

Hickory Ridge Marriott
1195 Summerhill Dr., Lisle IL 60532

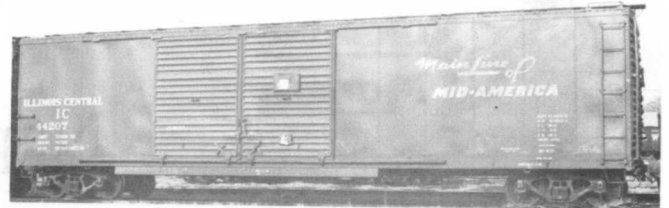
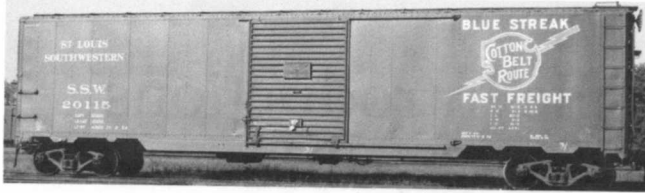
Autocars to Boxcars:



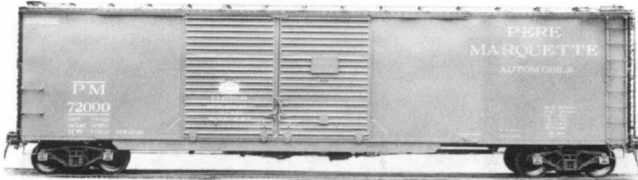
PM 88350/54600 Series -- Soo 75400 Series
10' & 7' Door -- SSW 45000/38500 Sealed
Door -- IC 166000/36500/39000 -- CV
42000/43000 12' and 6' Door Series -- WIF
100 Series -- CNJ 19000 Series -- THP&D
400 Series



More Motor Special: Utility Loaders



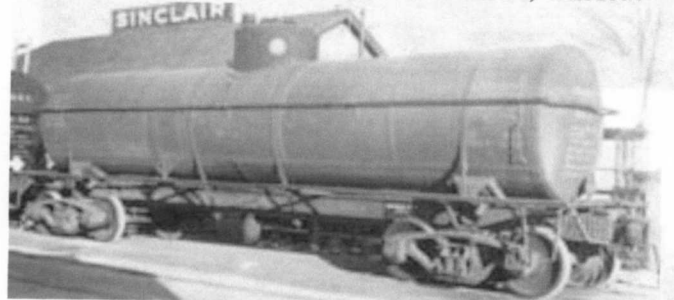
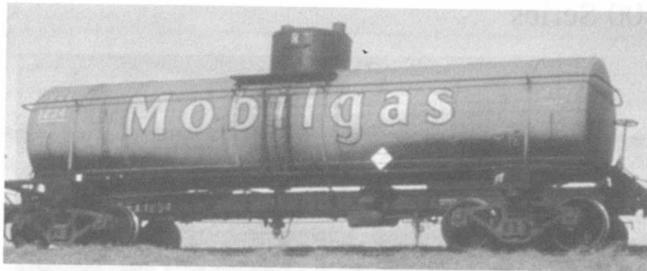
ATSF Fe-24 & Raised Roof – SSW 20000 with & w/o end door & DF Loader – IC 161401/44000 -- PM 72000 Utility Loader



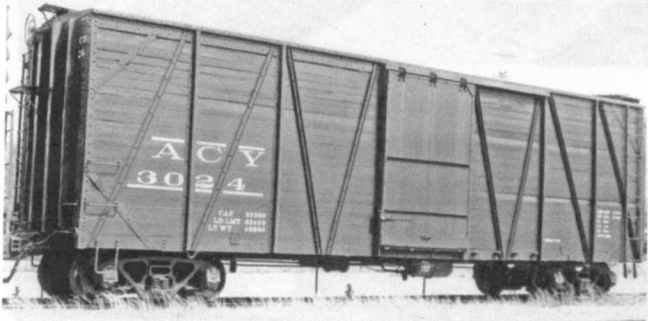
Wabash Autocars:



More Type 17 Radial Rivet Tank Cars: Early and Late Mobil, Gulf, Sinclair "PARX", others:



Tall Mather Boxcars for ACY, Trona, GM&O, MRS, Ball Line:



NYC and P&E Off-set side Hopper Mini – and more items